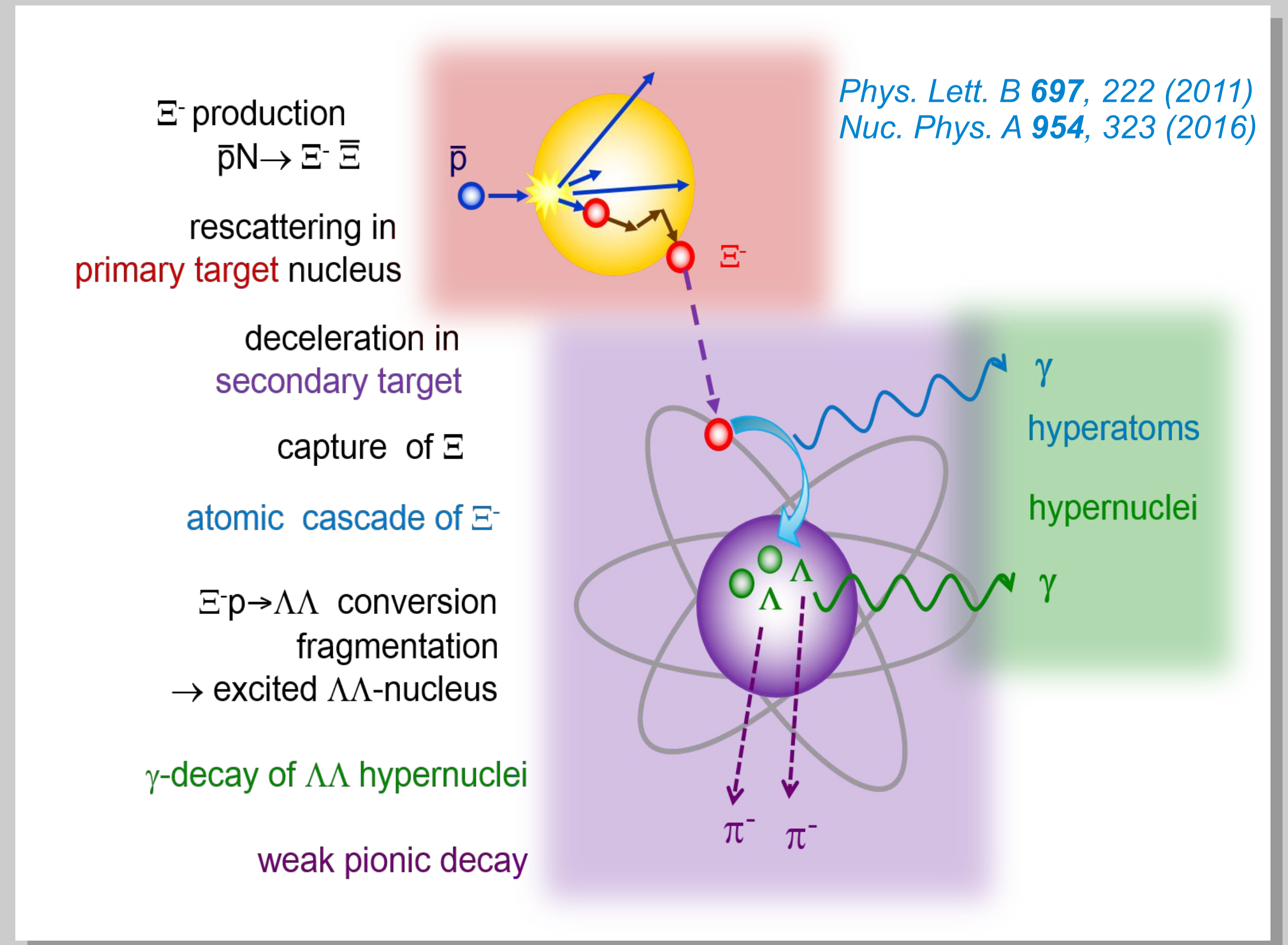
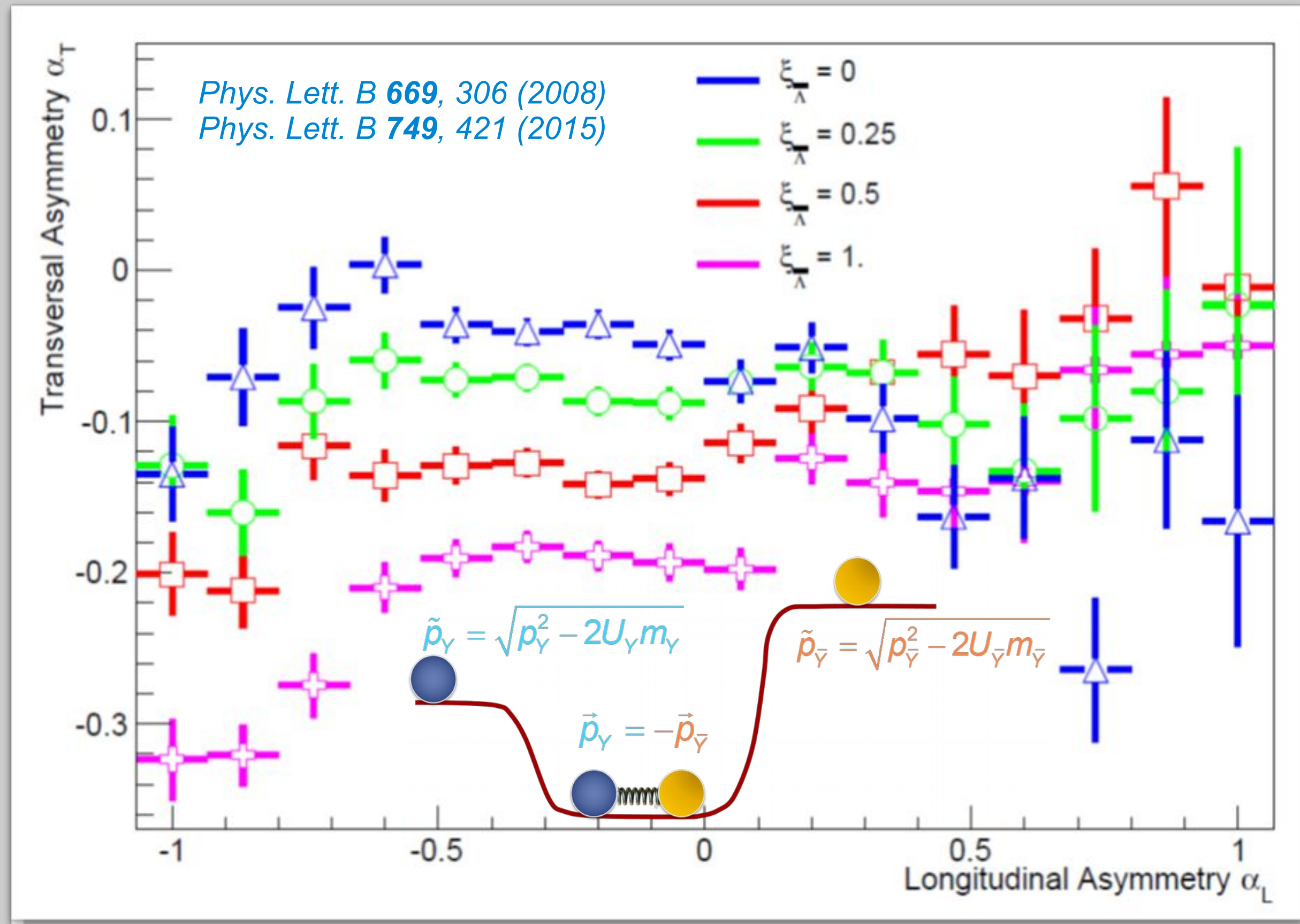
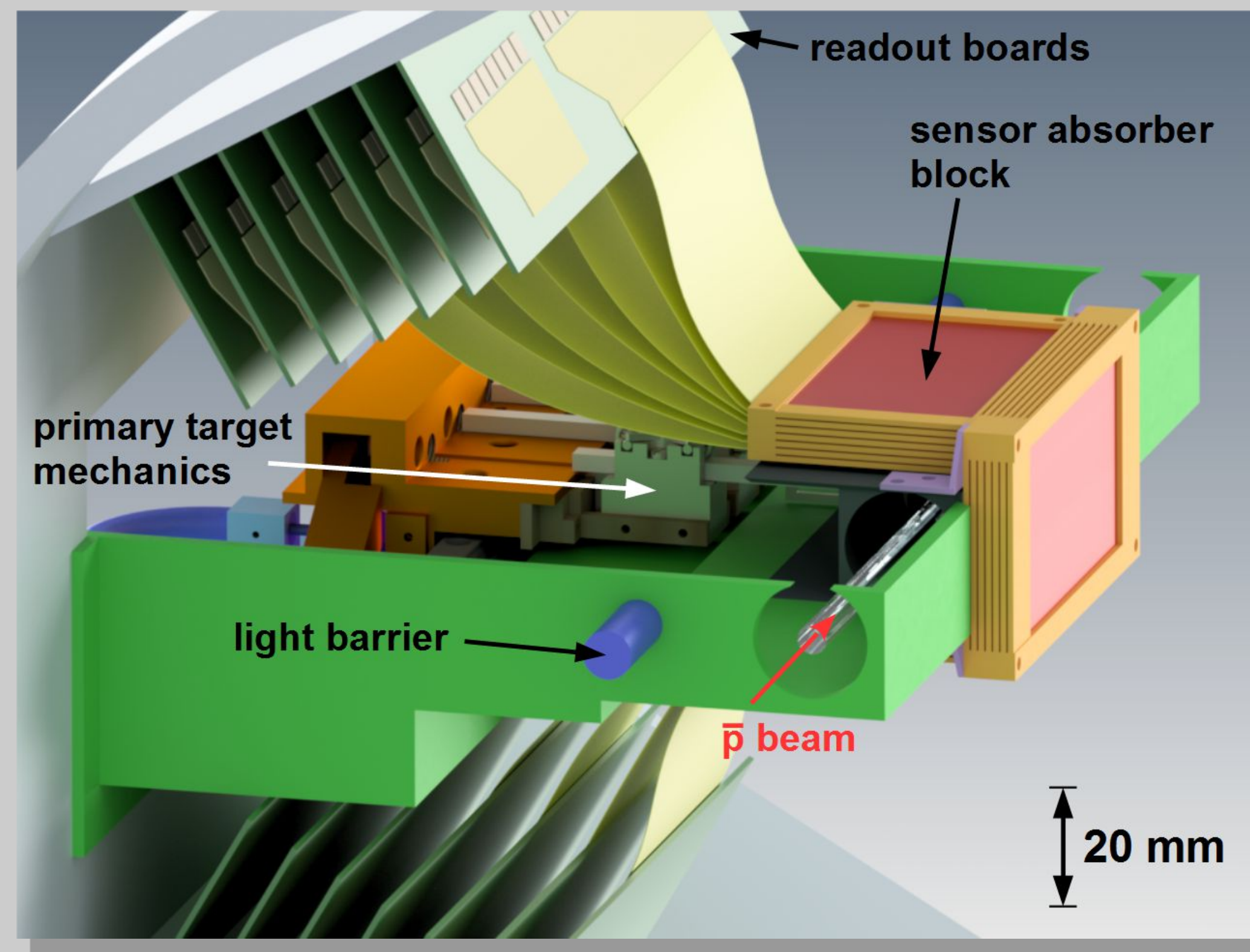
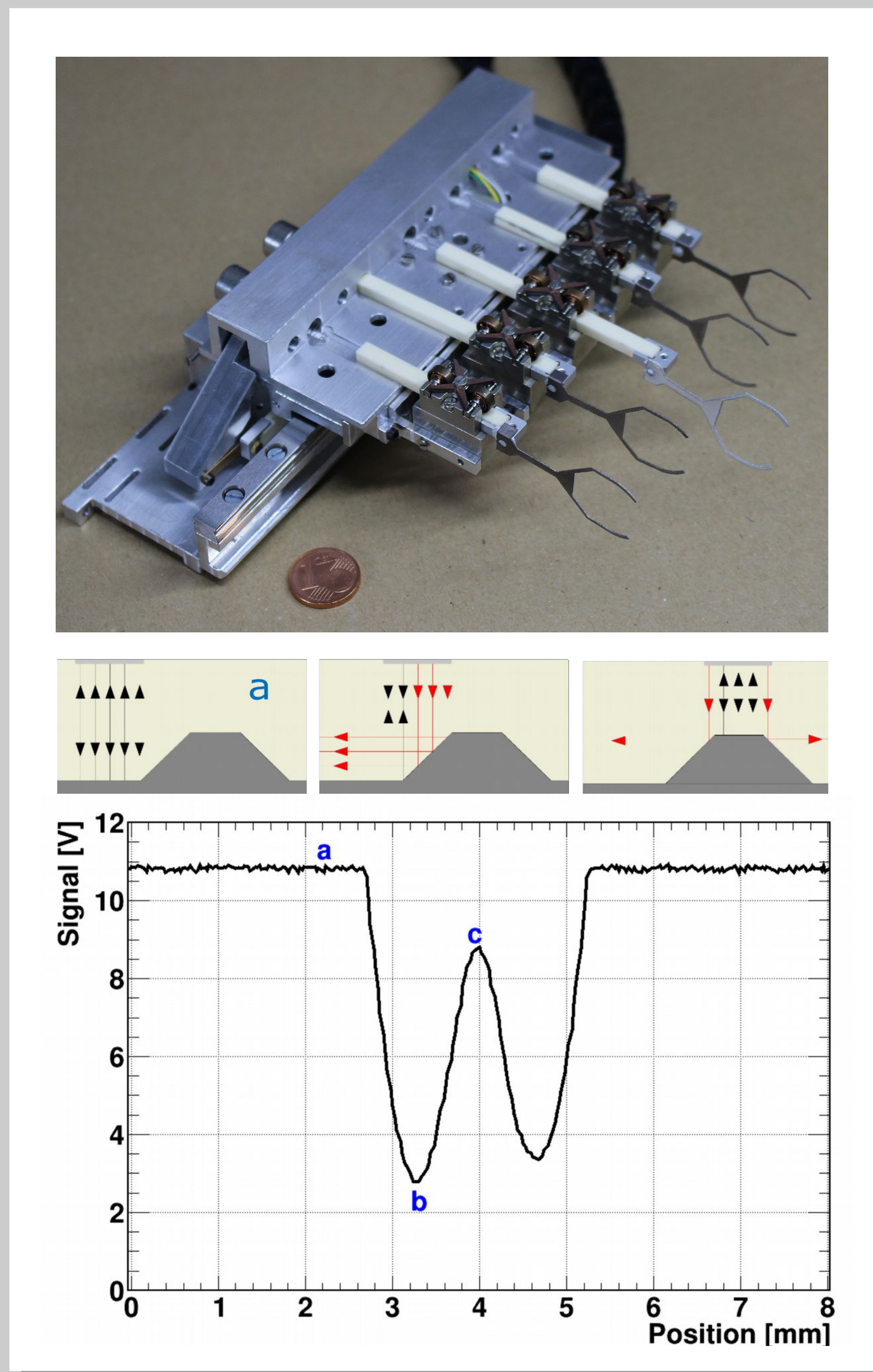


**Physics topics**

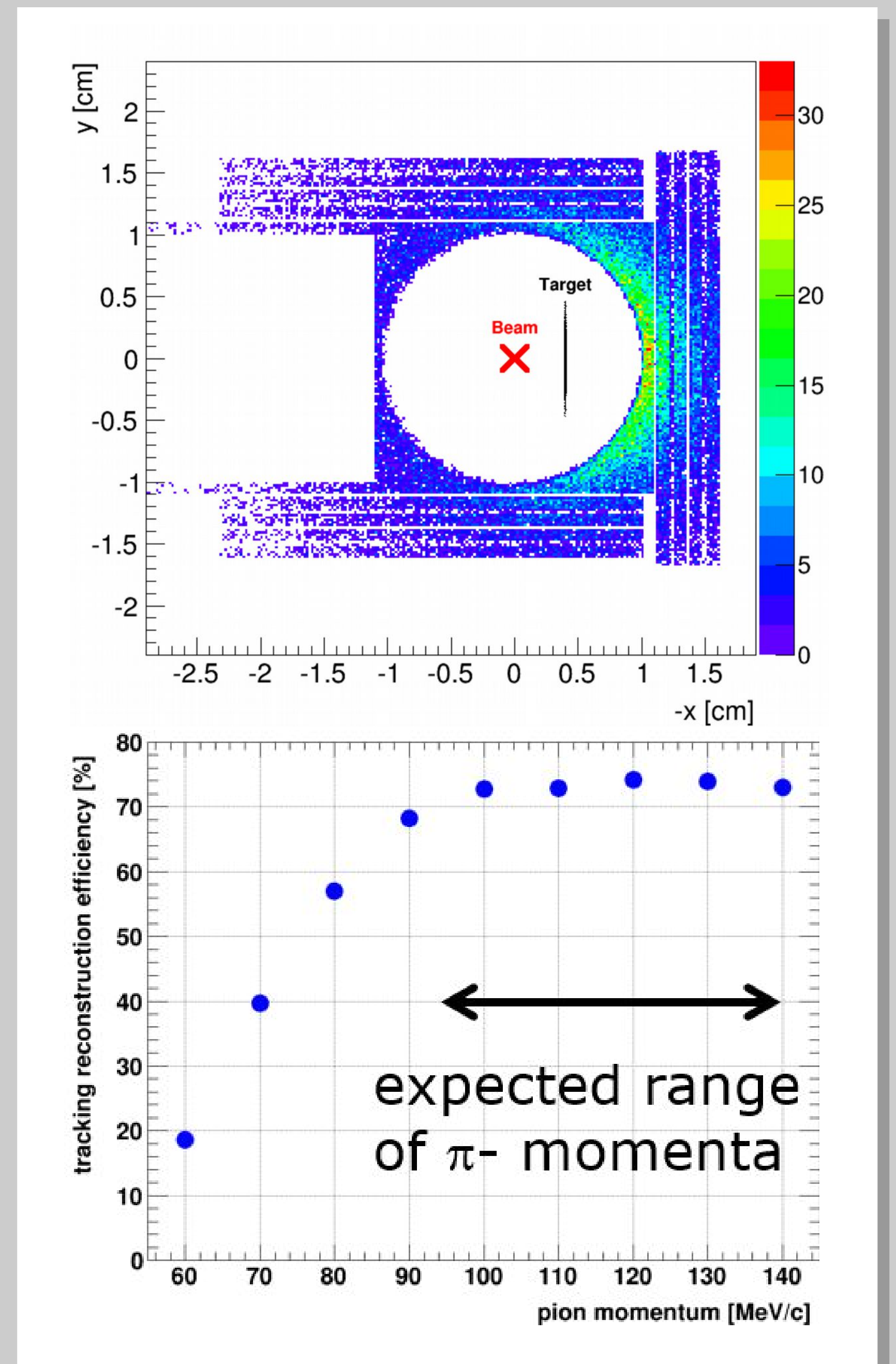


**Two-stage target system**

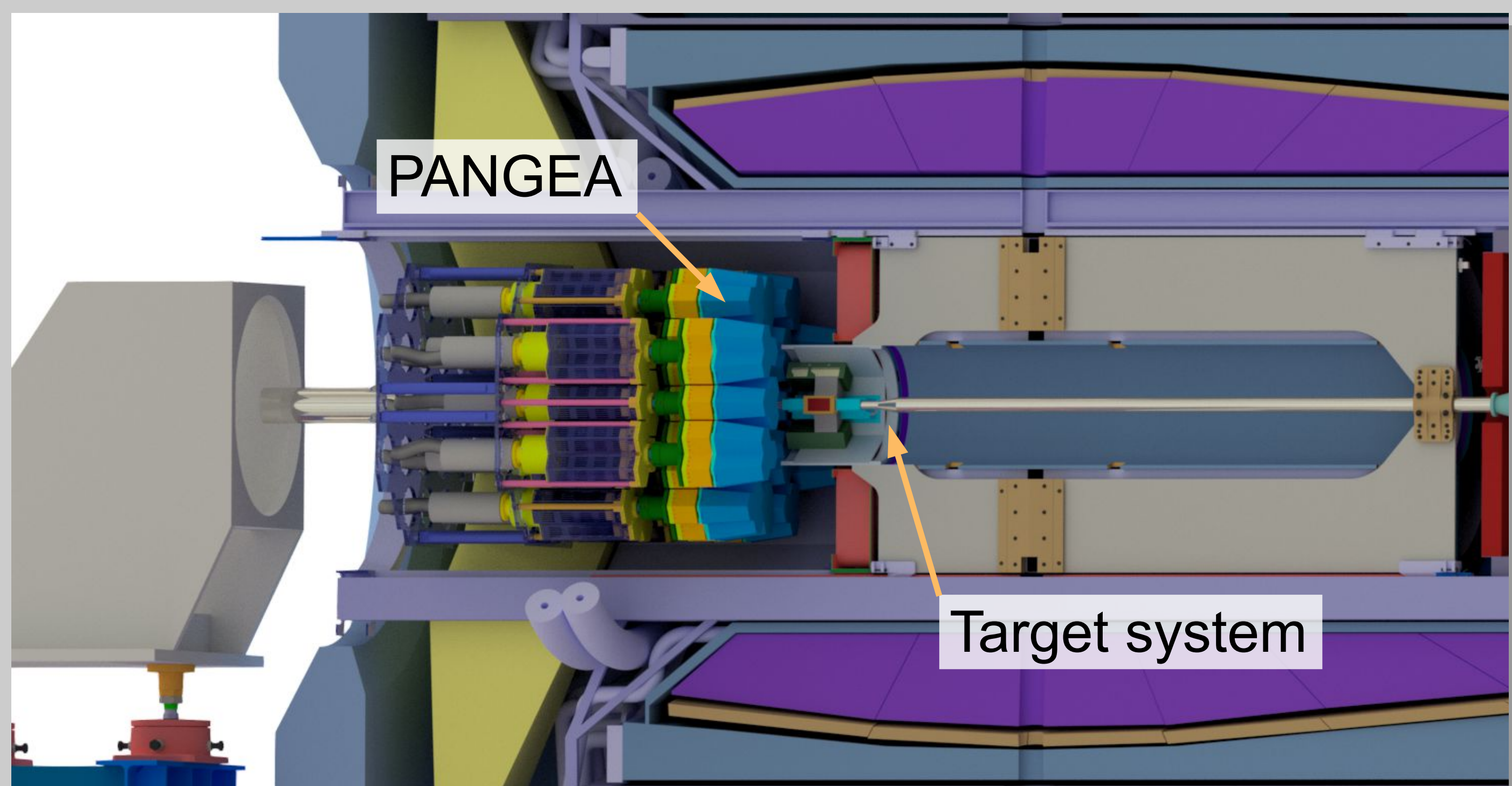


Primary target with thin internal carbon filaments positioned by piezo motors (top left) and scheme of radiation tolerant position control system (bottom left)

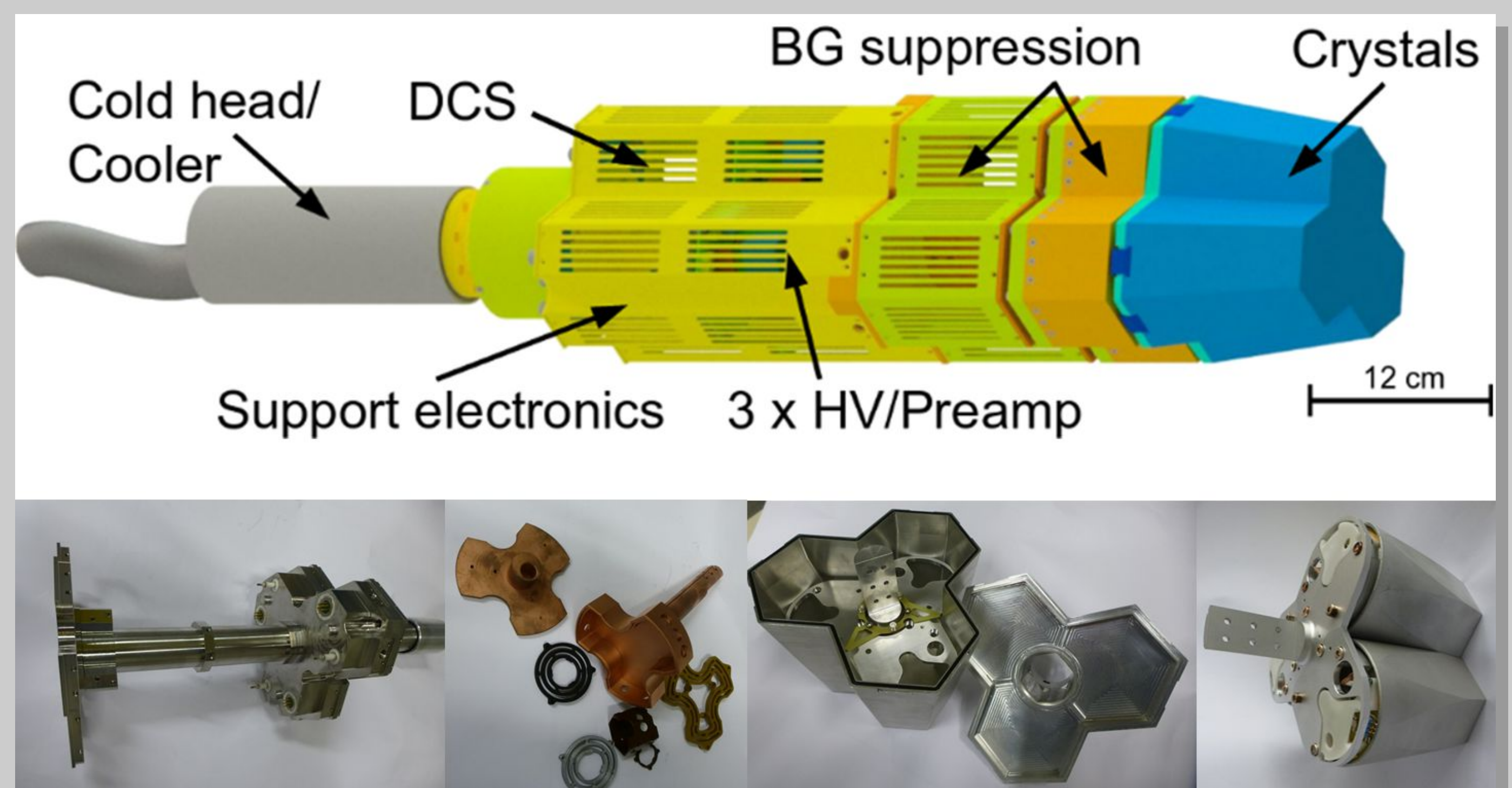
Secondary target for capturing  $\Xi^-$  in absorber layers (top right) and tracking of decay pions in sandwiched silicon sensors (bottom right)



**Panda GERmanium Array**



Integration of the hyper nuclear experiment inside the PANDA barrel spectrometer



Highly integrated germanium triple cluster detector commonly developed by PANDA and NUSTAR