

Control Logic, Secondary Target and the Germanium Array of the PANDA Hypernuclei Experiment

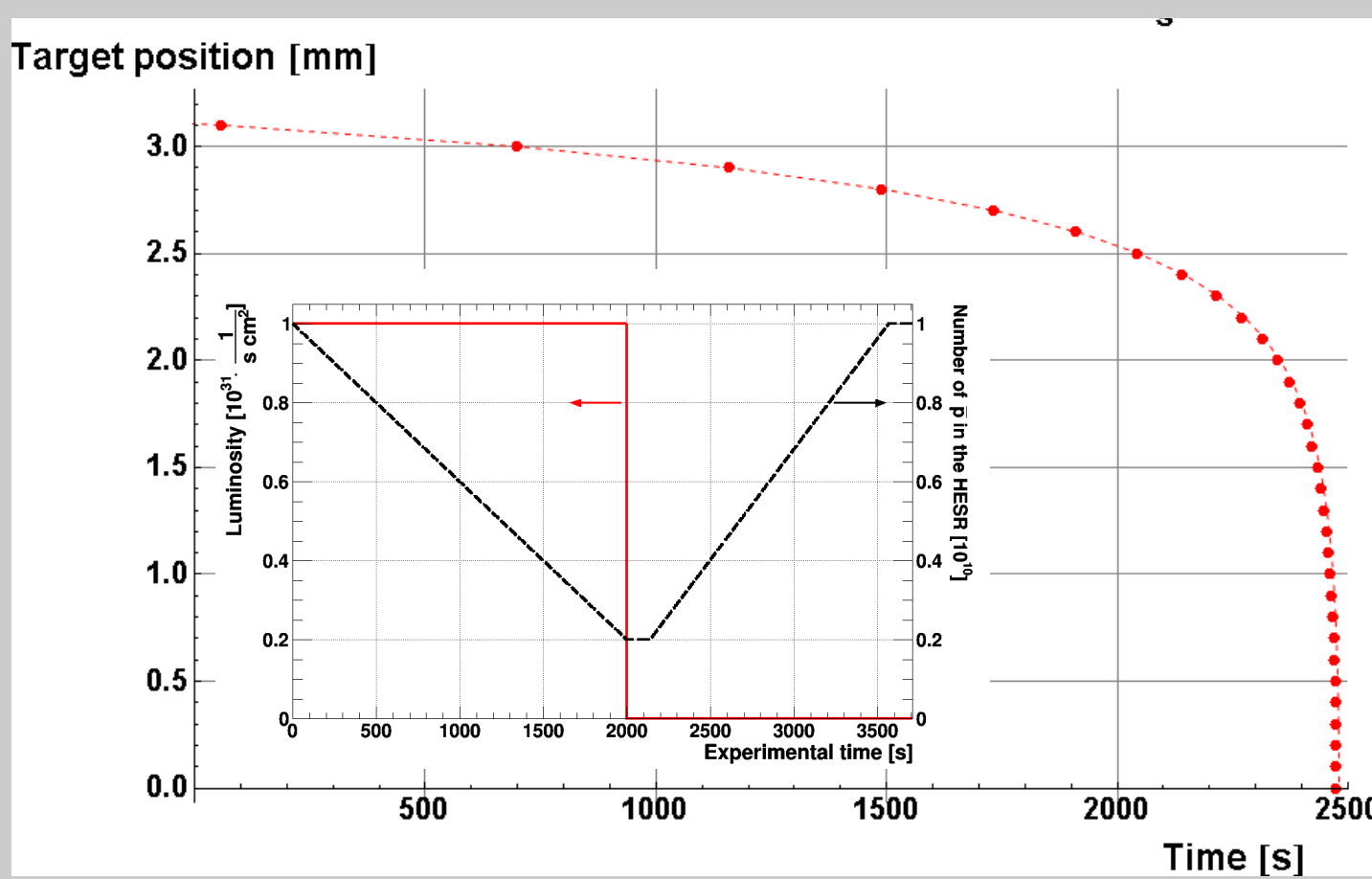
*Michael Bötting¹, Patrick Achenbach^{1,2}, Sebastian Bleser¹, Jürgen Gerl³, Ivan Kojouharov³, Josef Pochodzalla^{1,2}, Birte Sauer¹, Falk Schupp¹, Marcell Steinen¹, Christian Tiefenthaler¹



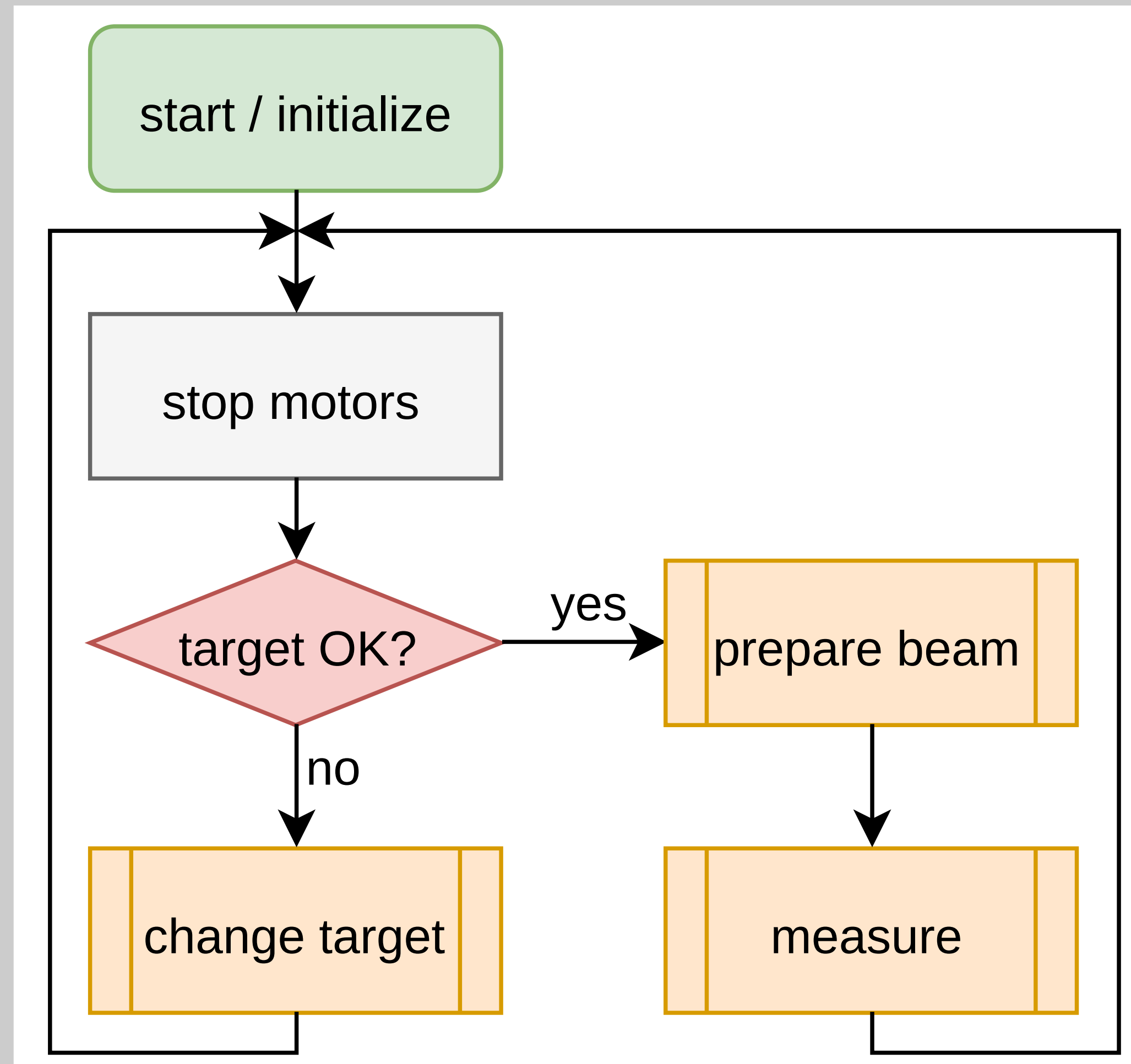
¹Helmholtz-Institut Mainz, Germany; ²Institut für Kernphysik, Johannes Gutenberg-Universität Mainz, Germany; ³GSI Helmholtzzentrum für Schwerionenforschung, Darmstadt, Germany

PANDA DCS			
Magnets	Charged PID	Muon System	Hypernuclei Experiment
Targets	EM Calorimeter	Tracking System	Primary Target
Services	Online systems	Silicon detectors	Secondary Target
			Germanium Detector

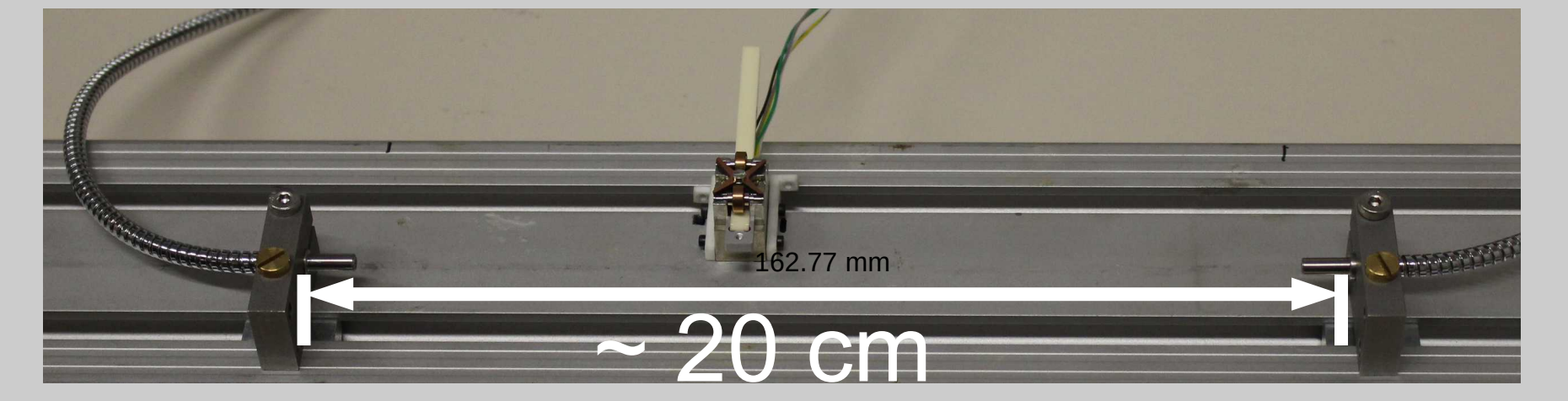
Control logic for the PANDA Experiment



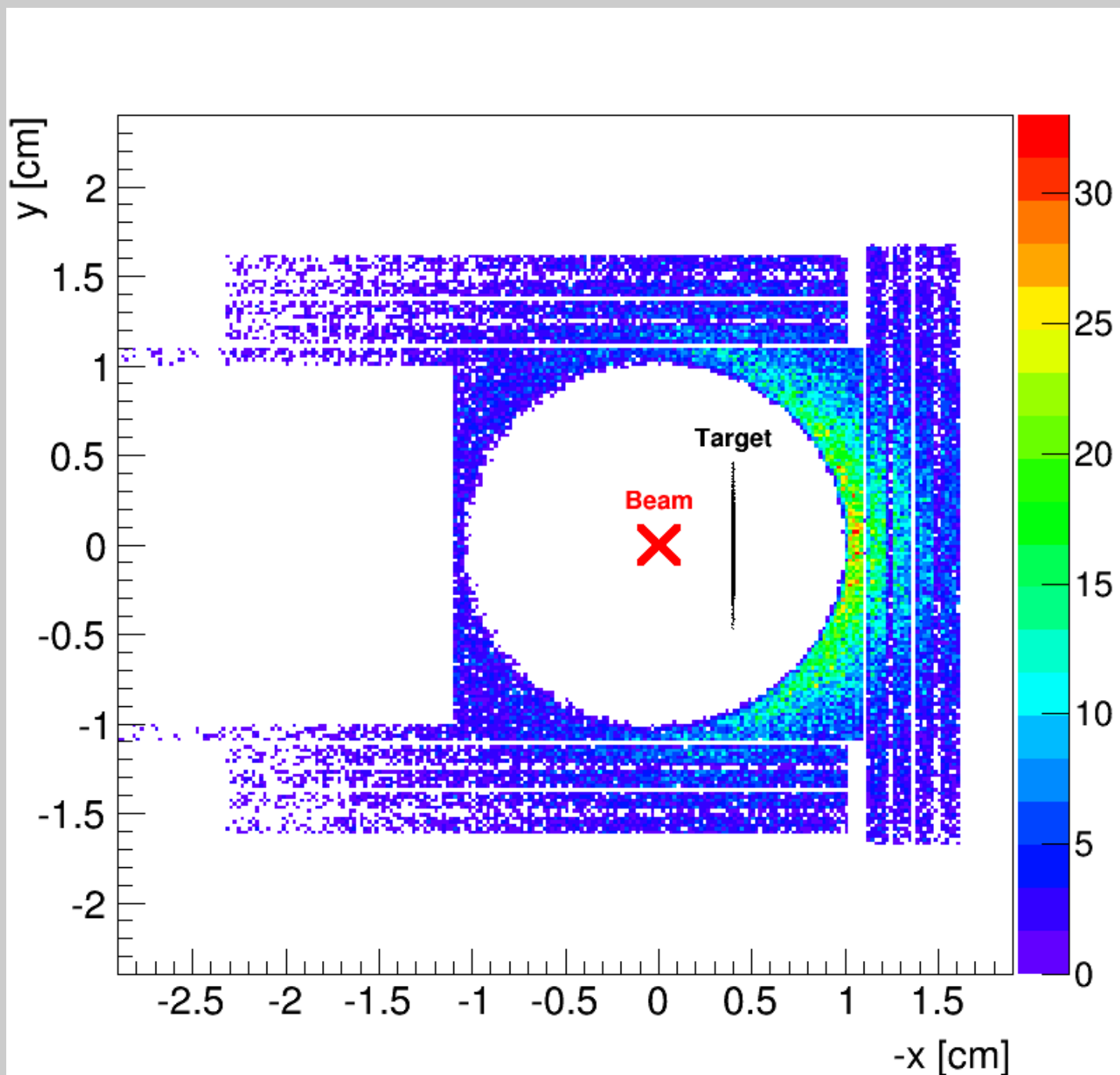
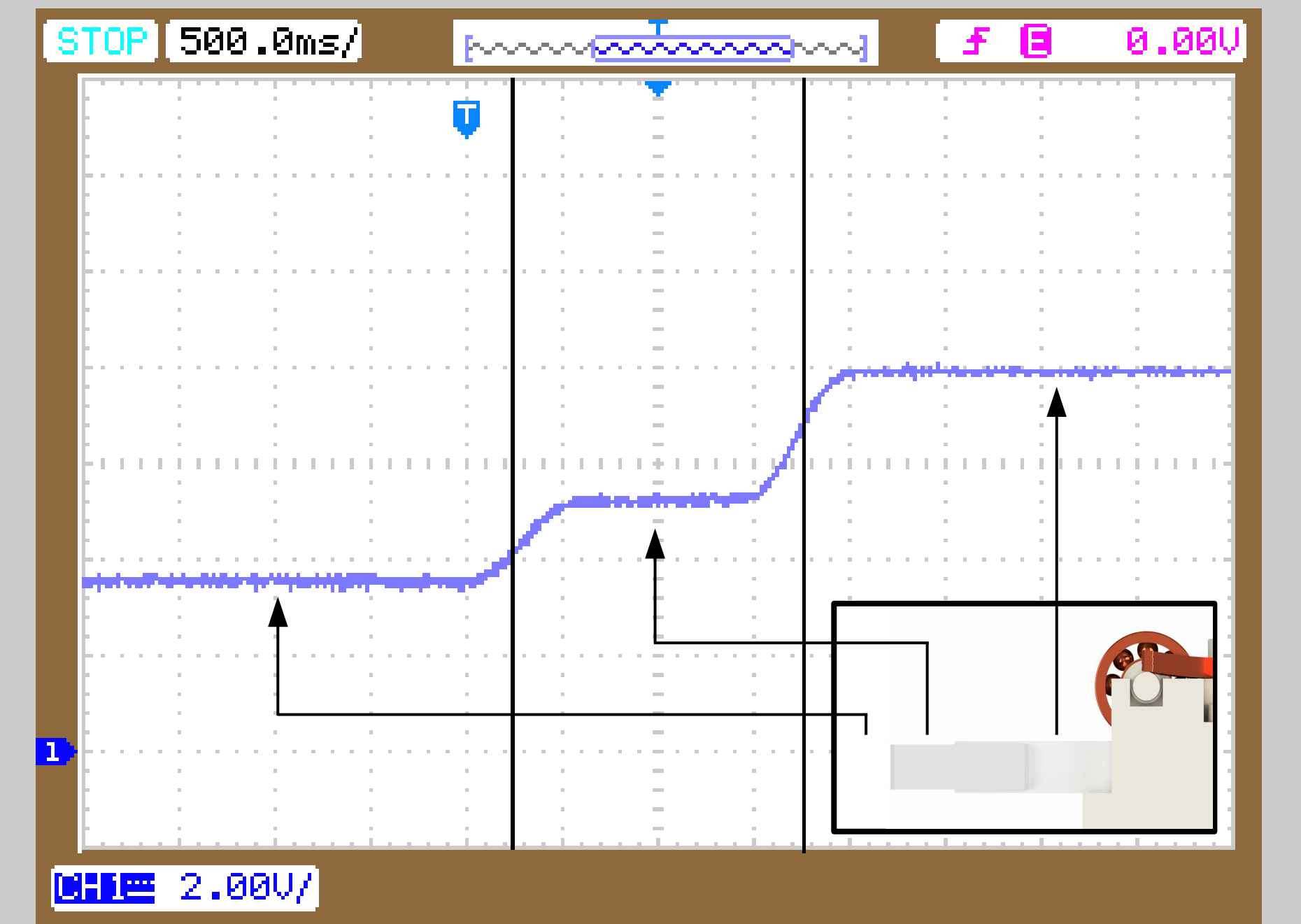
Experiment cycle and primary target offset



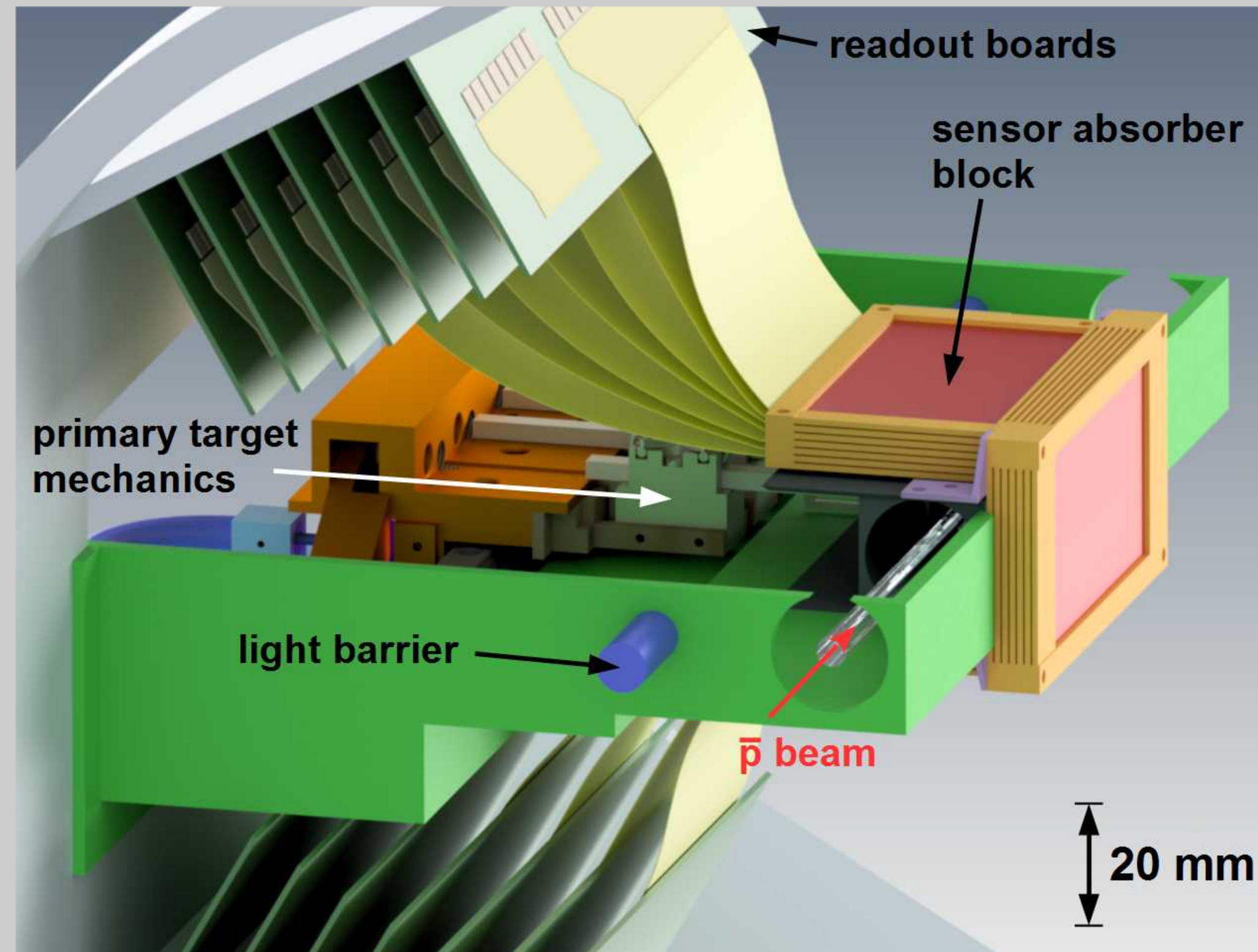
Flow chart of the hypernuclei primary target control



Proof of concept for primary target interlock
Differing heights distinguishable

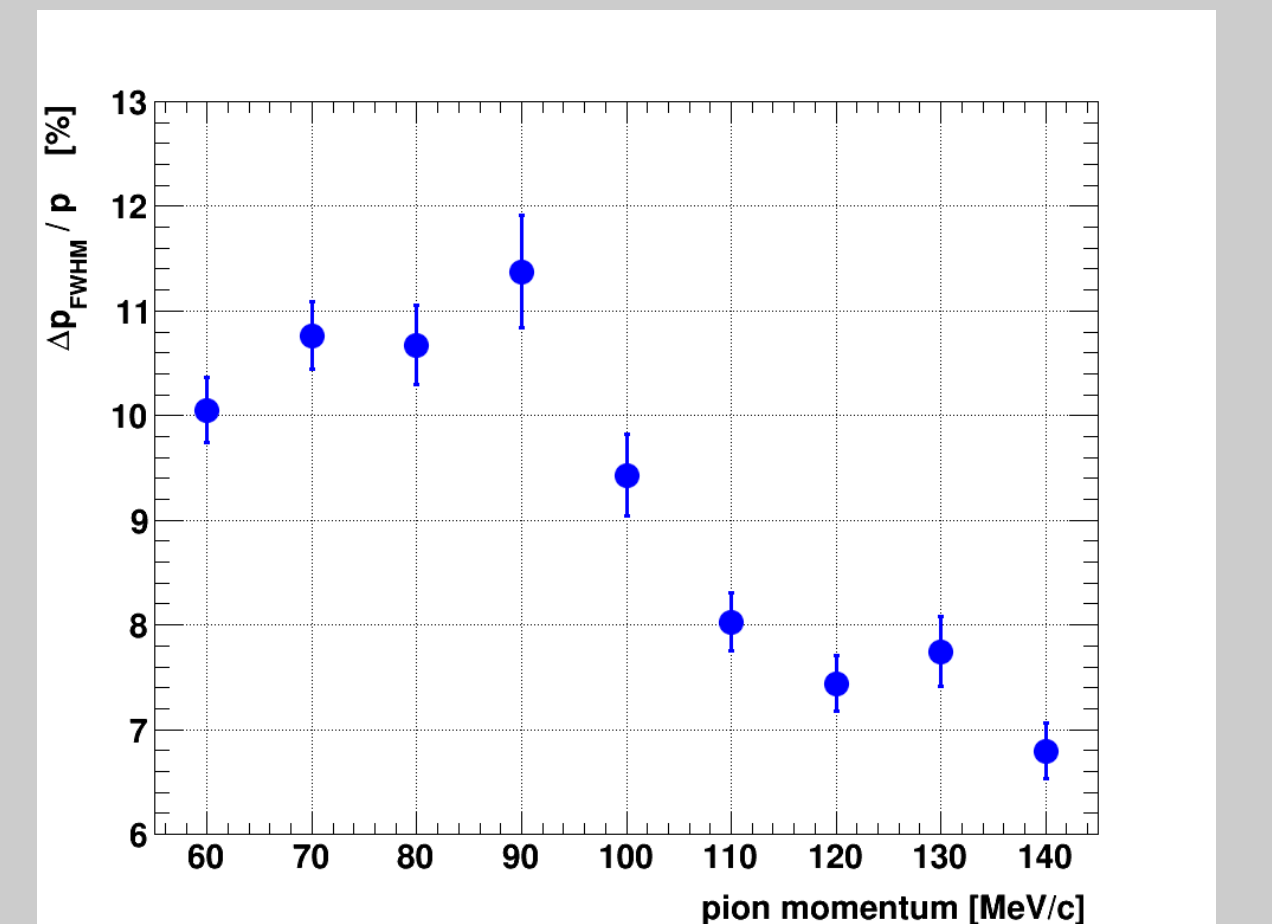


Stopping points of produced Ξ^-
→ Starting points of deexcitation γ and decay π

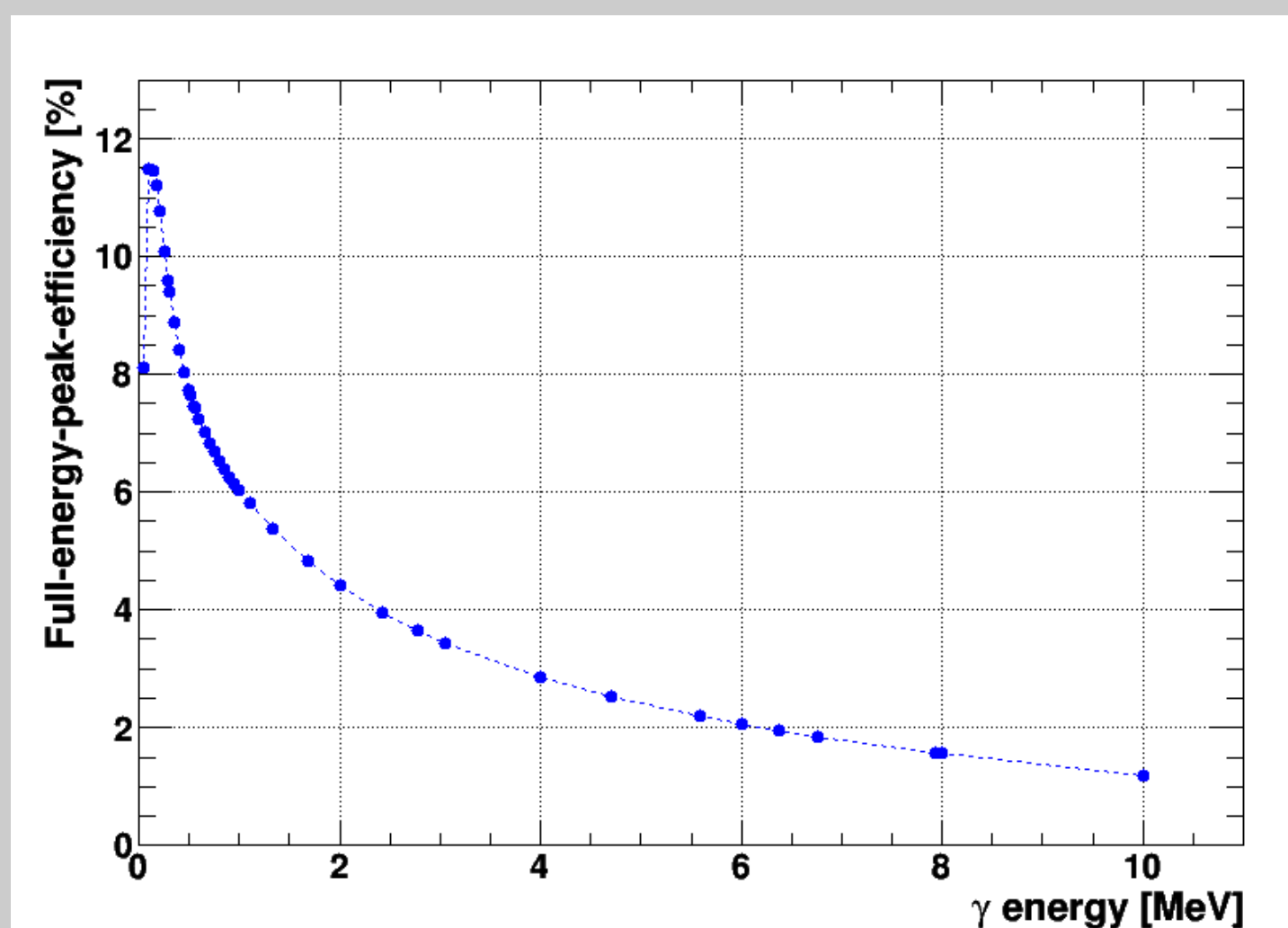
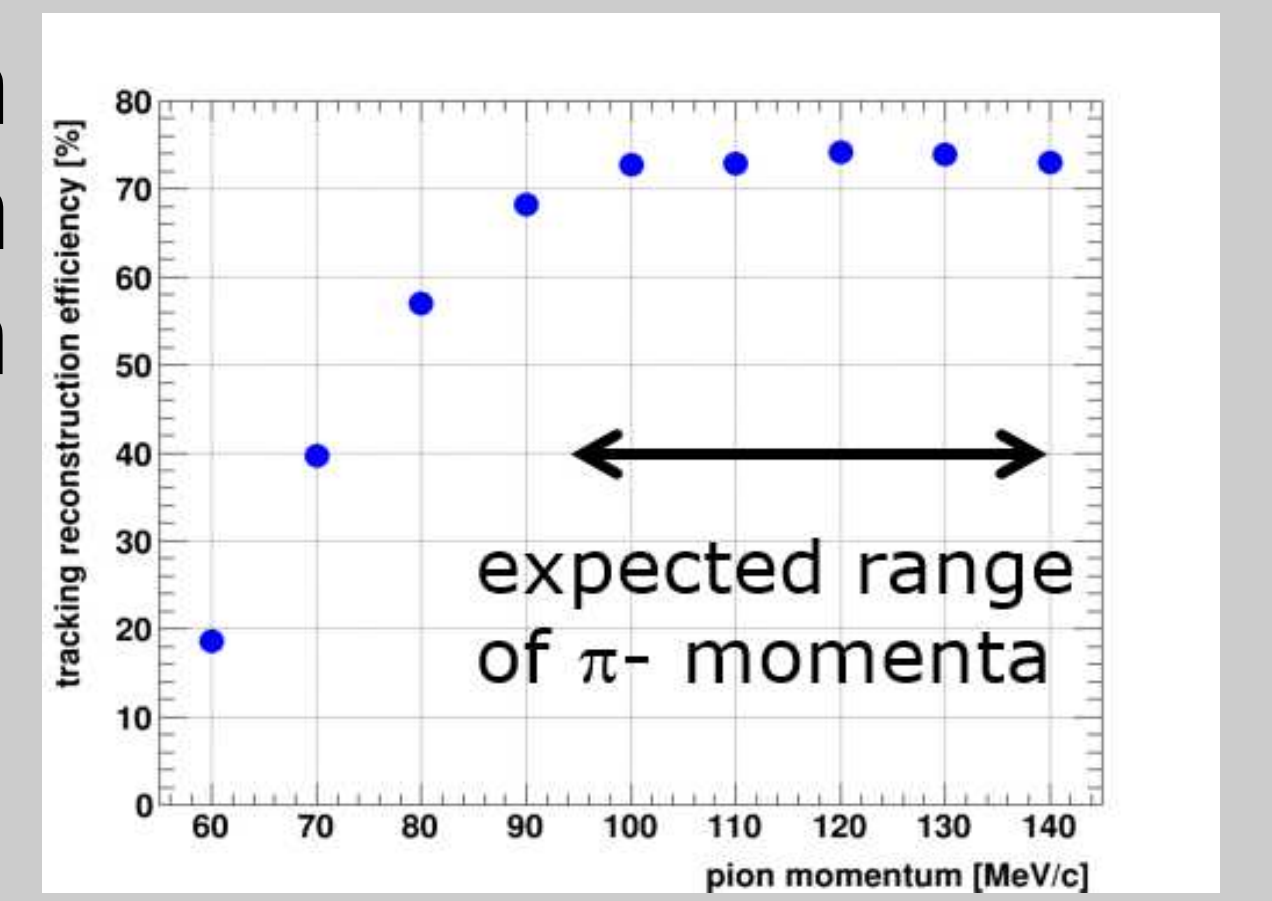


Sketch of the target system with readout electronics

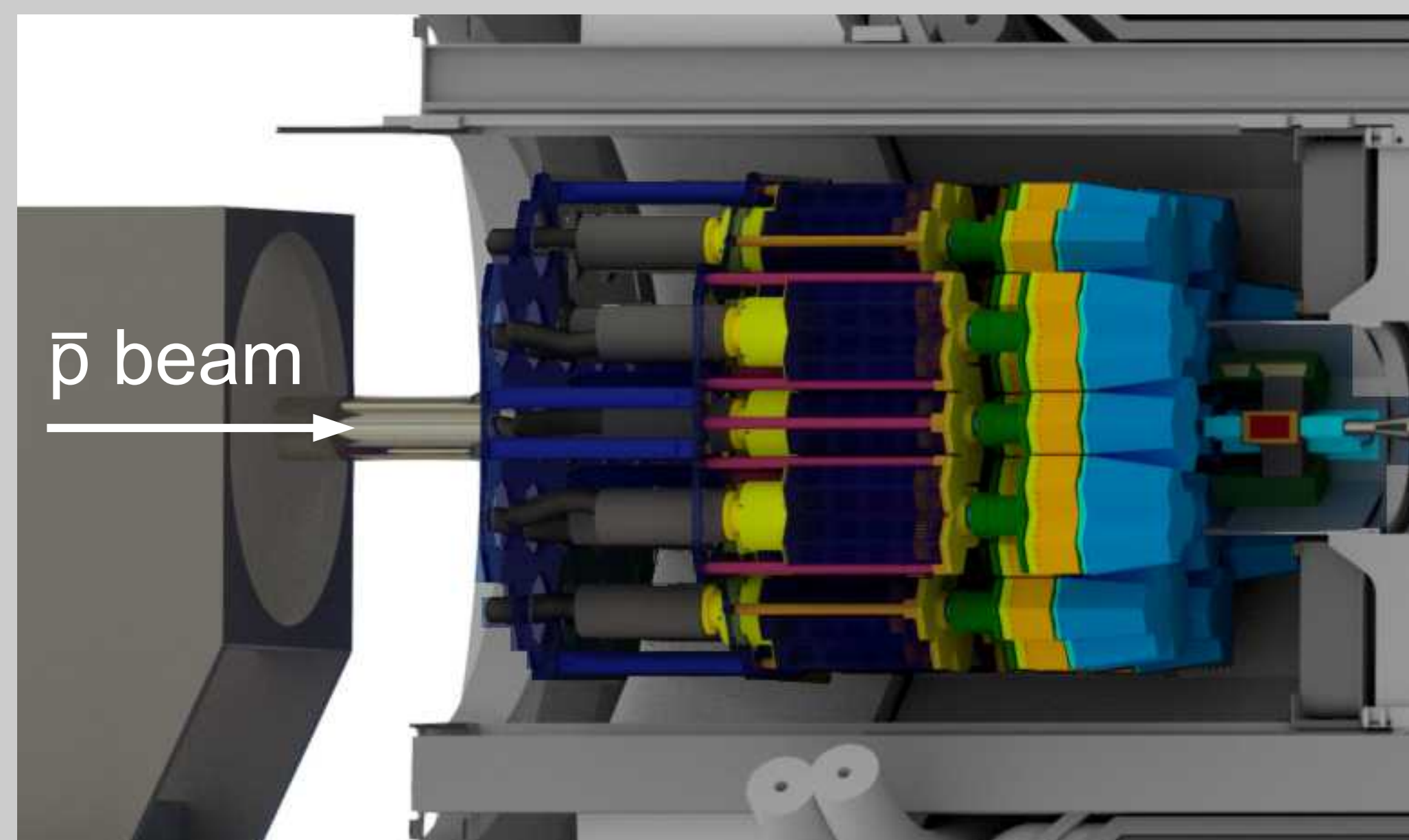
Pion reconstruction efficiency



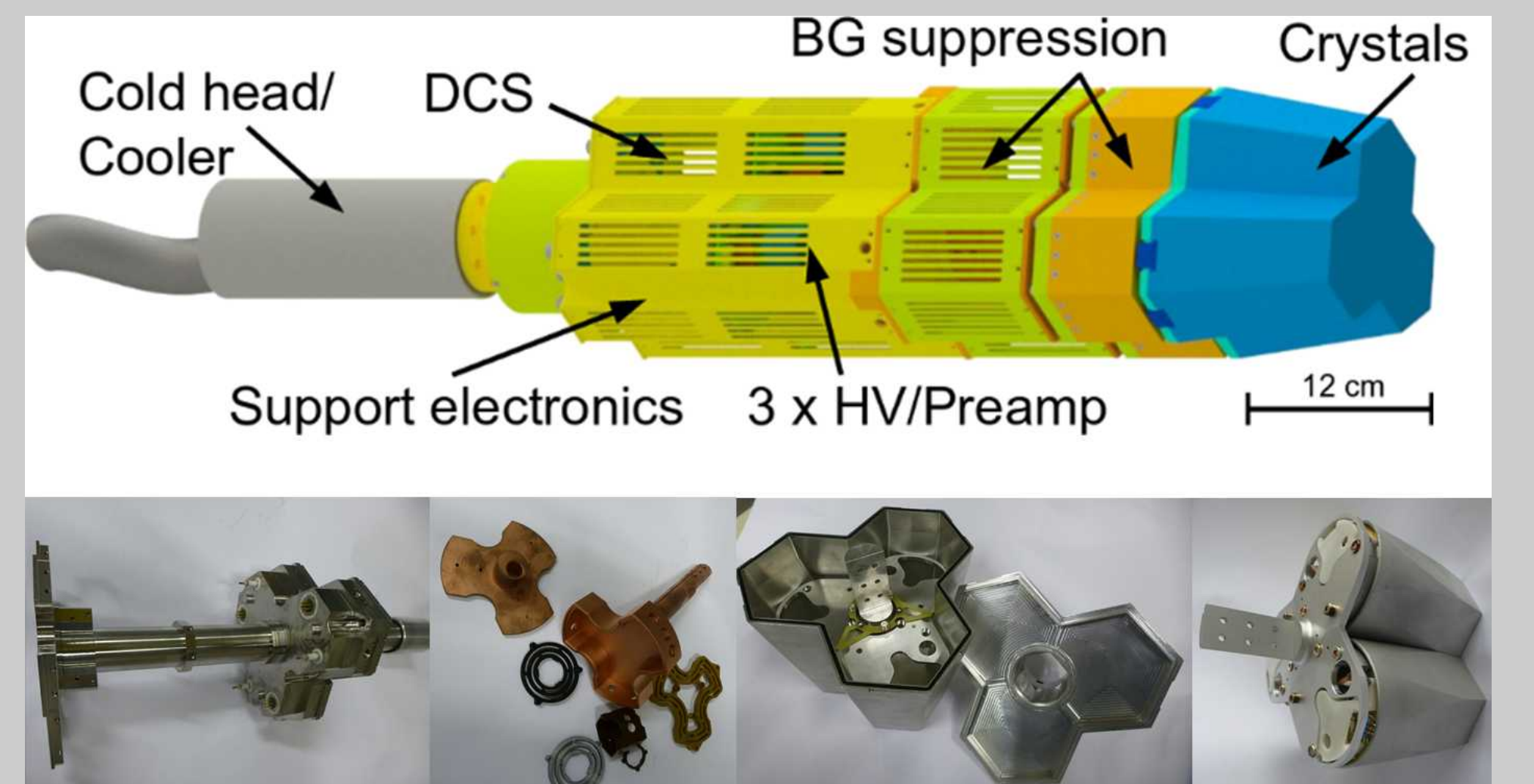
Pion momentum resolution



PANGEA detection efficiency



Integration of the hypernuclei experiment inside the PANDA barrel spectrometer



Highly integrated germanium triple cluster detector commonly developed by PANDA and NuSTAR